



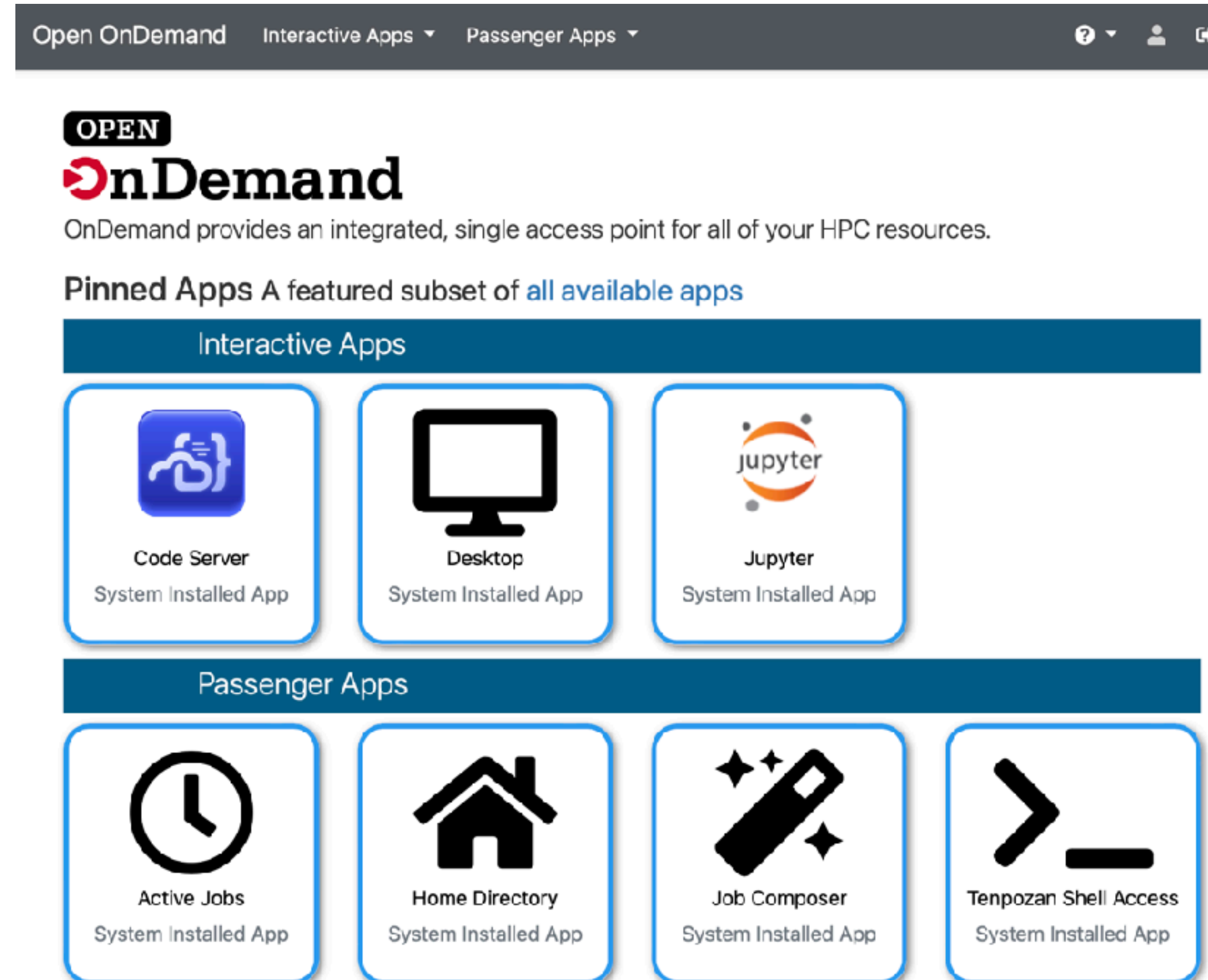
# Open OnDemandハンズオン

---

中尾昌広（理化学研究所 計算科学研究センター）

# ハンズオン

- Interactive Appsは3つ、Passenger Appsは4つ準備しています。
- Open OnDemandのインストールと設定については、Qiitaの「さくらVPSではじめるOpen OnDemand」の記事を参照ください
  - 今回はさくらVPSではなく、理研内の仮想PCを利用しています
  - スペックは32コア・128GBです
  - 上の記事では紹介しなかった設定も行っています
    - ・ Code Server, Jupyter, Grafana



The screenshot displays the Open OnDemand web interface. At the top, there is a navigation bar with 'Open OnDemand', 'Interactive Apps', and 'Passenger Apps' menus. Below the navigation bar, the 'OPEN OnDemand' logo is visible, followed by the text 'OnDemand provides an integrated, single access point for all of your HPC resources.' Underneath, there is a section titled 'Pinned Apps A featured subset of all available apps'. This section is divided into two categories: 'Interactive Apps' and 'Passenger Apps'. The 'Interactive Apps' section contains three items: 'Code Server System Installed App', 'Desktop System Installed App', and 'Jupyter System Installed App'. The 'Passenger Apps' section contains four items: 'Active Jobs System Installed App', 'Home Directory System Installed App', 'Job Composer System Installed App', and 'Tenpozan Shell Access System Installed App'.

# リモートデスクトップ

Open OnDemand Interactive Apps Passenger Apps

**OPEN**  
**OnDemand**

OnDemand provides an integrated, single access point for all of your HPC resources.

**Pinned Apps** A featured subset of [all available apps](#)

Interactive Apps

Code Server System Installed App

**Desktop System Installed App**

Jupyter System Installed App

クリック

Passenger Apps

Active Jobs System Installed App

Home Directory System Installed App

Job Composer System Installed App

Tenpozan Shell Access System Installed App

クリック

Open OnDemand Interactive Apps Passenger Apps

Home / My Interactive Sessions / Desktop

Interactive Apps

- Desktops
- Desktop**
- Servers
- Code Server
- Jupyter

**Desktop**

This app will launch an interactive desktop.

Number of hours

1

**Launch**

\* The Desktop session data for this session can be accessed under the [data root directory](#).

クリック

**Desktop (509)** 1 node | 1 core

Host: >\_globus.cloud.r-ccs.riken.jp

Created at: 2023-10-10 17:58:16 JST

Time Remaining: 59 minutes

Session ID: f05b7361-bcee-47ba-b799-2ed2c50be125

Compression 0 (low) to 9 (high)

Image Quality 0 (low) to 9 (high)

**Launch Desktop**

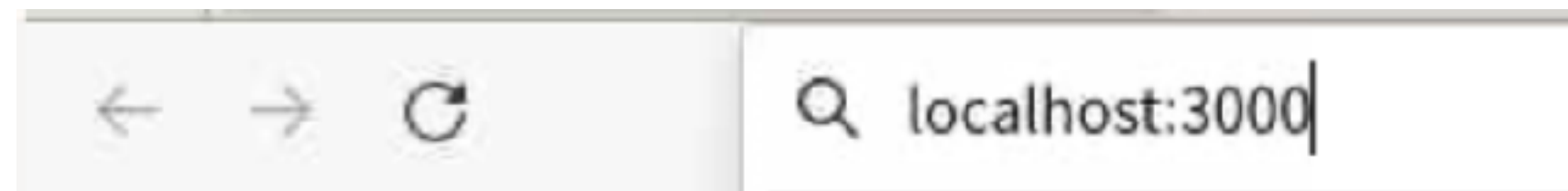
View Only (Share-able Link)

Delete

# Grafanaの起動の方法



クリック



アドレス欄に「localhost:3000」と入力



利用ユーザ数

メモリ使用量

ロードアベレージ



# Active Jobs : ジョブの監視

---

> 510 sys/dashboard/sys/bc\_desktop mnakao 00:00:21 debug **Running** Tenpozan 

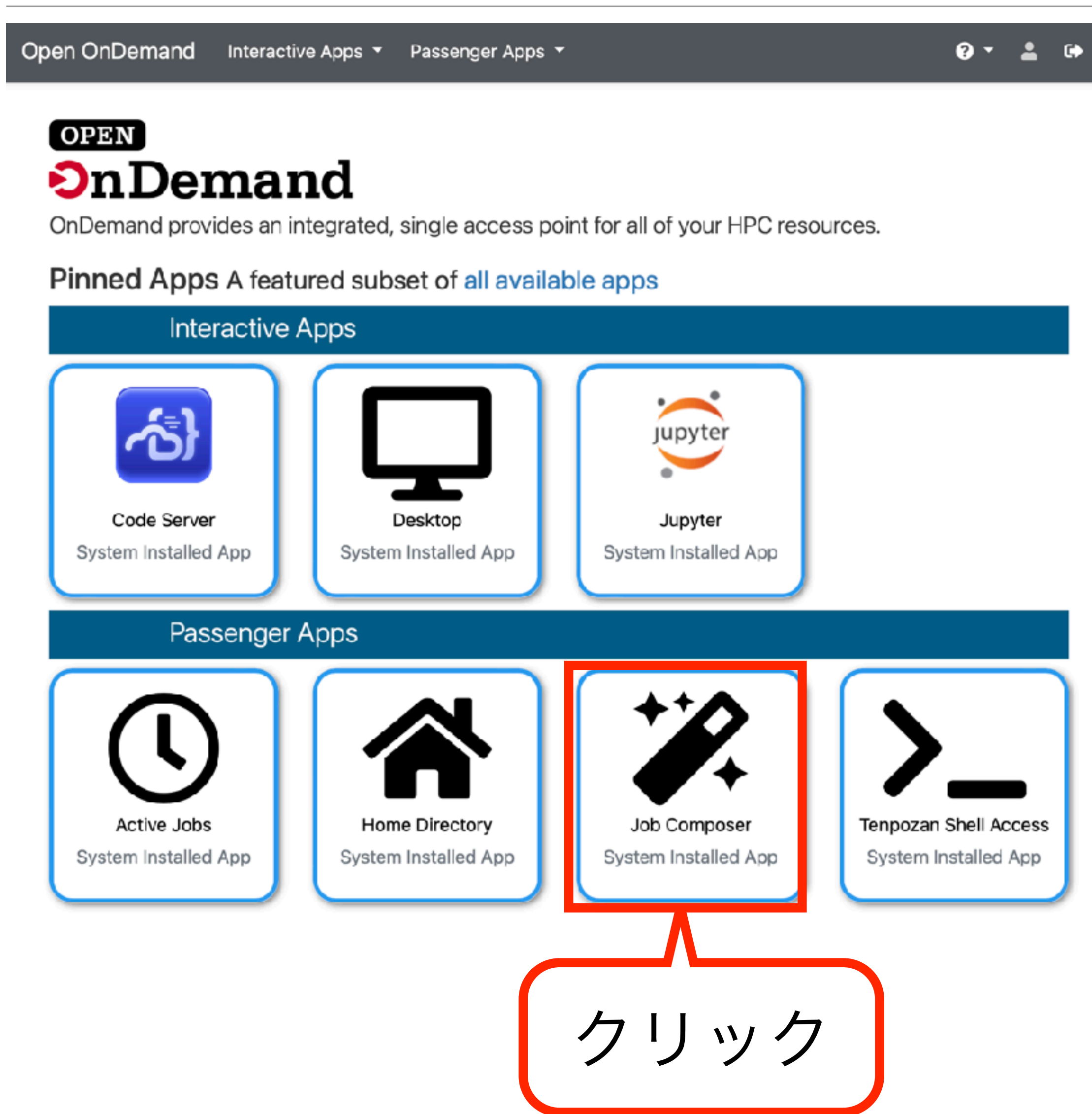
- リモートデスクトップのジョブが見えています
- 右端のゴミ箱のアイコンをクリックすると、ジョブの停止が可能です

# Home Directory : ファイルのアップロード

The screenshot shows the OnDemand web interface. At the top, there is a navigation bar with 'Open OnDemand', 'Interactive Apps', and 'Passenger Apps'. Below this, the 'OPEN OnDemand' logo is displayed, followed by the text 'OnDemand provides an integrated, single access point for all of your HPC resources.' and 'Pinned Apps A featured subset of all available apps'. The interface is divided into two sections: 'Interactive Apps' and 'Passenger Apps'. Under 'Interactive Apps', there are three cards: 'Code Server', 'Desktop', and 'Jupyter'. Under 'Passenger Apps', there are four cards: 'Active Jobs', 'Home Directory', 'Job Composer', and 'tenpozan Shell Access'. The 'Home Directory' card is highlighted with a red box and a callout bubble containing the Japanese text 'クリック'. To the right of the main interface, there is a toolbar with buttons for 'Open in Terminal', 'Refresh', 'New File', 'New Directory', 'Upload', 'Download', 'Copy/Move', and 'Delete'. The 'Upload' button is highlighted with a red box and a callout bubble containing the Japanese text 'クリック'. Below the main interface, there is a dialog box with a dashed border and a close button. The dialog contains the text 'Drop files here, browse files or browse folders' and a note at the bottom: 'Empty directories will be included in the upload only when a directory upload is initiated via drag and drop. This is because the File and Directory Entries API is available only on a drop event, not during an input change event. Powered by @uppy'.

Drag and Dropでファイルのアップロードを行えます。  
適当なファイルをアップロードしてみよう

# Job Composer : ジョブの投入



Open OnDemand Interactive Apps Passenger Apps

**OPEN**  
**OnDemand**  
OnDemand provides an integrated, single access point for all of your HPC resources.

Pinned Apps A featured subset of [all available apps](#)

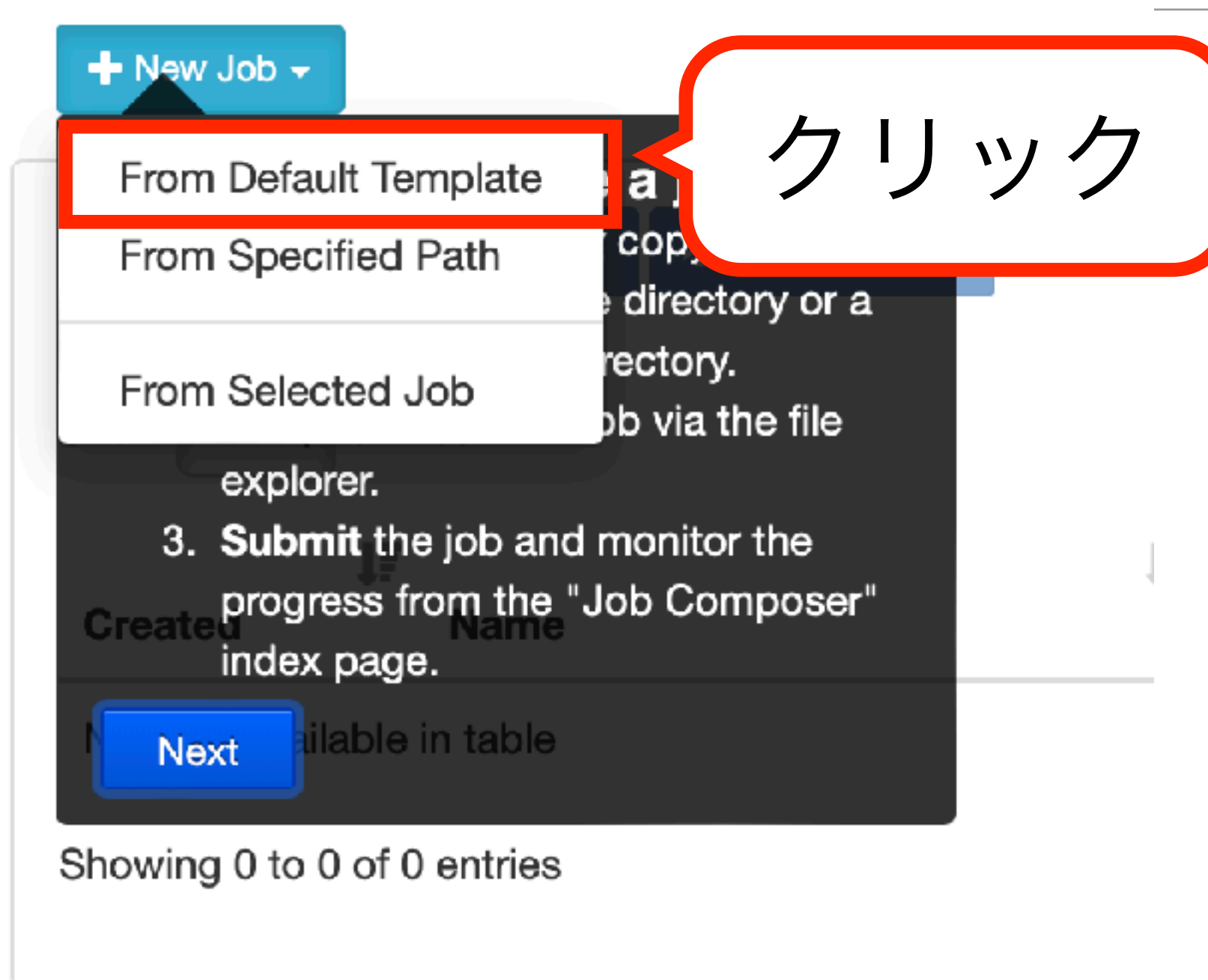
Interactive Apps

- Code Server System Installed App
- Desktop System Installed App
- Jupyter System Installed App

Passenger Apps

- Active Jobs System Installed App
- Home Directory System Installed App
- Job Composer System Installed App**
- Tenpozan Shell Access System Installed App

クリック



+ New Job

- From Default Template**
- From Specified Path
- From Selected Job

クリック

3. **Submit** the job and monitor the progress from the "Job Composer" index page.

Next

Showing 0 to 0 of 0 entries



Submit Script

main\_job.sh

Script contents:

```
#!/bin/bash  
# JOB HEADERS HERE  
echo "Hello World"
```

**Open Editor** Open Terminal Open Dir

必要があれば、  
クリックして編集



Submit Stop

クリック



# Job Composer : Webターミナルの起動

Open OnDemand Interactive Apps Passenger Apps

**OPEN**  
**OnDemand**  
OnDemand provides an integrated, single access point for all of your HPC resources.

Pinned Apps A featured subset of [all available apps](#)

**Interactive Apps**

- Code Server System Installed App
- Desktop System Installed App
- Jupyter System Installed App

**Passenger Apps**

- Active Jobs System Installed App
- Home Directory System Installed App
- Job Composer System Installed App
- Tenzoan Shell Access System Installed App**

```
a03011@ondemand-test:~$ top
top - 18:02:48 up 16 days, 23:24, 1 user, load average: 0.00, 0.00, 0.00
tasks: 252 total, 1 running, 251 sleeping, 0 stopped, 0 zombie
Cpu(s):  0.0 us,  0.0 sy,  0.0 ni, 99.9 id,  0.0 wa,  0.0 hi,  0.1 si,  0.0 st
MiB Mem : 7674.4 total, 6194.2 free, 584.3 used, 895.9 buff/cache
MiB Swap: 8084.0 total, 8084.0 free,  0.0 used. 6797.8 avail Mem

  PID USER      PR  NI  VIRT  RES  SHR  S  %CPU  %MEM    TIME+  COMMAND
    1 root        20   0 238100 10780 8144 S   0.0   0.1   0:31.19 systemd
    2 root        20   0     0     0     0 S   0.0   0.0   0:00.21 kthreadd
    3 root         0  -20     0     0     0 I   0.0   0.0   0:00.00 rcu_gp
    4 root         0  -20     0     0     0 I   0.0   0.0   0:00.00 rcu_par_gp
    6 root         0  -20     0     0     0 I   0.0   0.0   0:00.00 kworker/0:0H-events_highpri
    9 root         0  -20     0     0     0 I   0.0   0.0   0:00.00 mm_percpu_wq
   10 root        20   0     0     0     0 S   0.0   0.0   0:00.00 rcu_tasks_rude_
   11 root        20   0     0     0     0 S   0.0   0.0   0:00.00 rcu_tasks_trace
   12 root        20   0     0     0     0 S   0.0   0.0   0:00.29 ksoftirqd/0
   13 root        20   0     0     0     0 I   0.0   0.0   0:39.07 rcu_sched
   14 root        rt    0     0     0     0 S   0.0   0.0   0:00.00 migration/0
   15 root        rt    0     0     0     0 S   0.0   0.0   0:00.57 watchdog/0
   16 root        20   0     0     0     0 S   0.0   0.0   0:00.00 cpuhp/0
   17 root        20   0     0     0     0 S   0.0   0.0   0:00.00 cpuhp/1
   18 root        rt    0     0     0     0 S   0.0   0.0   0:00.74 watchdog/1
```

適当にシェルを実行してみよう

クリック



# VSCodeとJupyterLab

Open OnDemand Interactive Apps Passenger Apps


OPEN

## OnDemand

OnDemand provides an integrated, single access point for all of your HPC resources.

Pinned Apps A featured subset of [all available apps](#)

Interactive Apps



Code Server  
System Installed App




Desktop  
System Installed App



Jupyter  
System Installed App

Passenger Apps



Active Jobs  
System Installed App



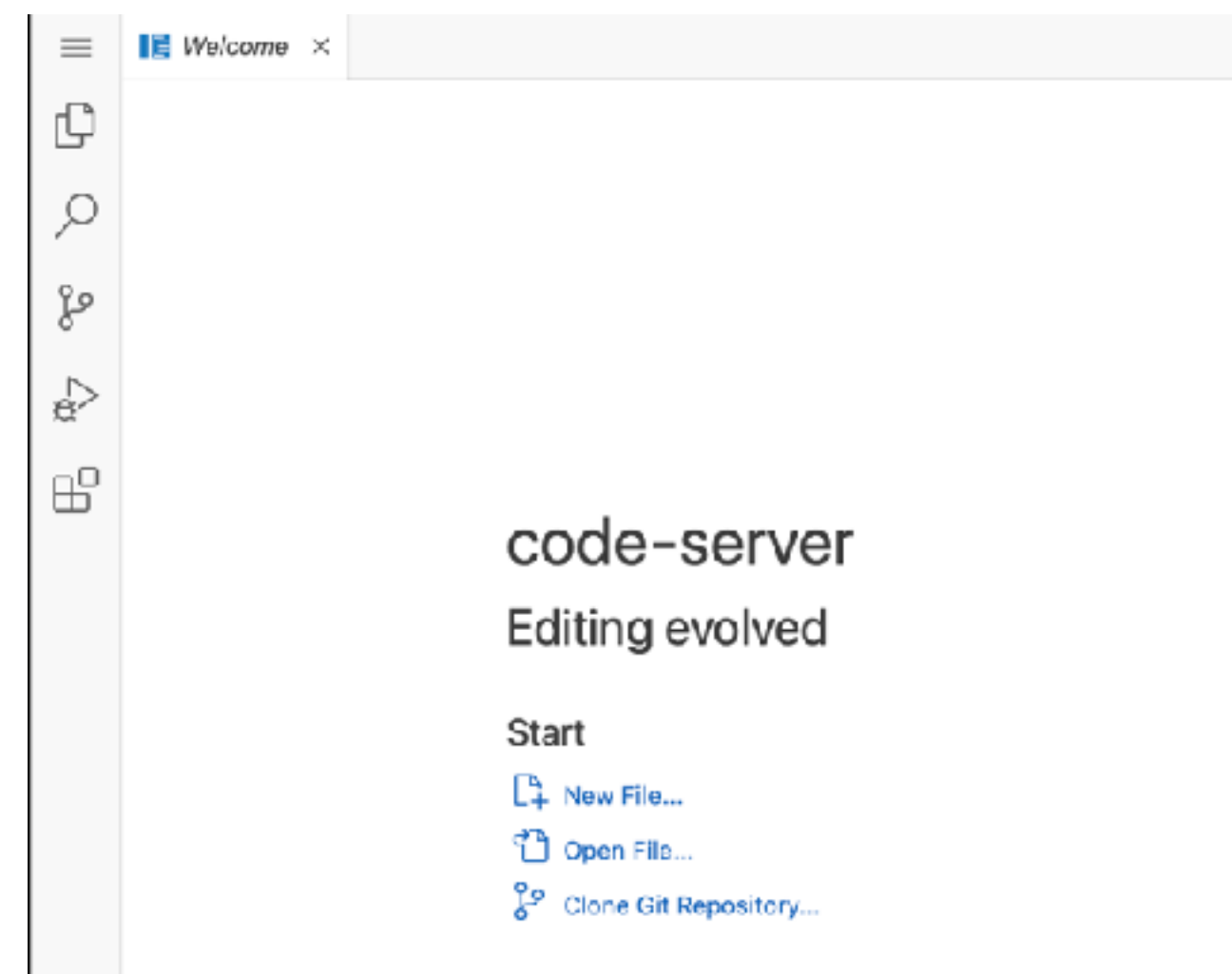
Home Directory  
System Installed App



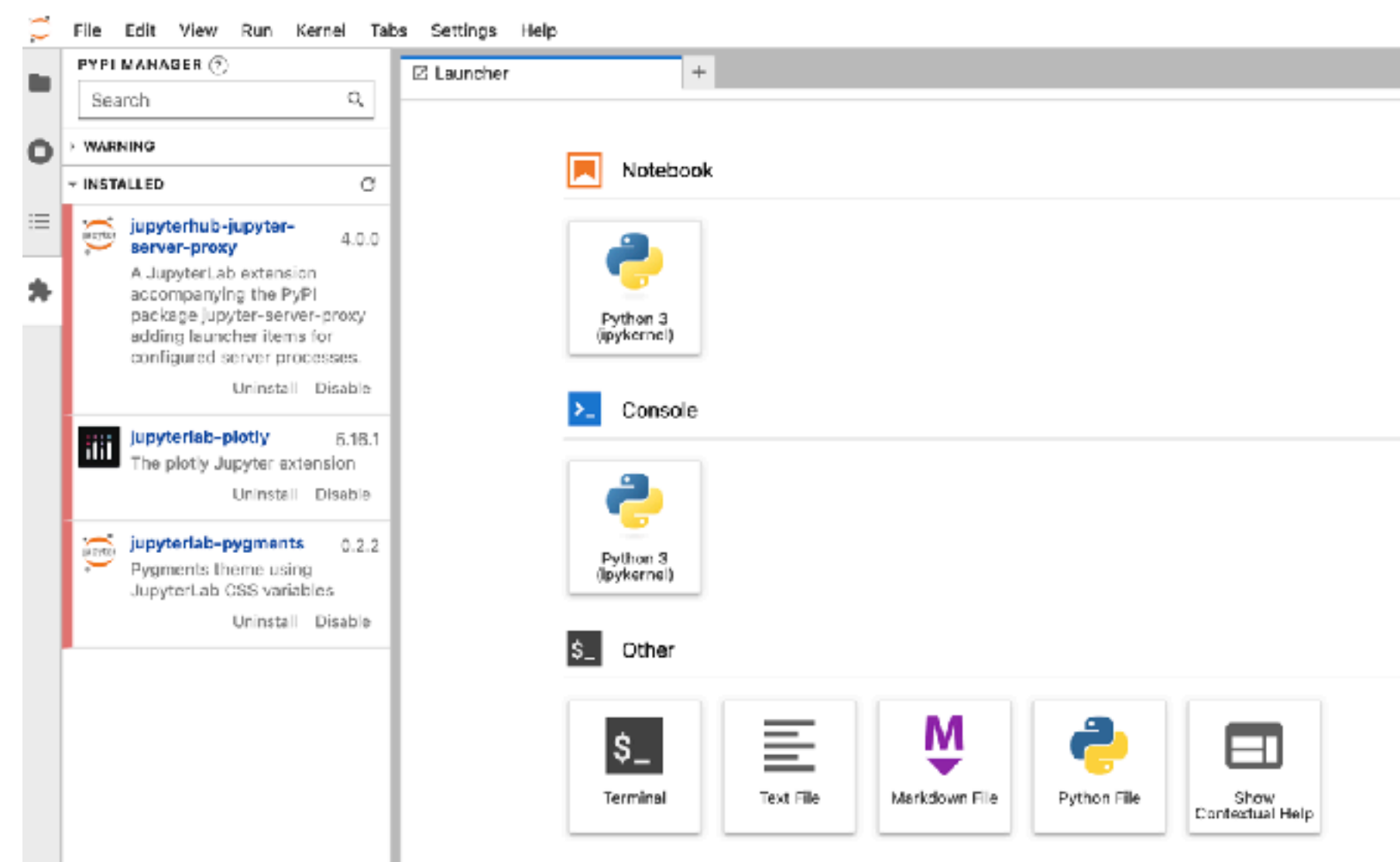
Job Composer  
System Installed App



Tenpozan Shell Access  
System Installed App



VSCode



JupyterLab